

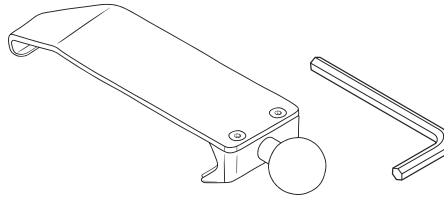
OFFROAD

WARNINGS

- Do not mount accessories in front of or near the path of airbag deployment.
- Check vehicle compatibility before install to avoid damage to the vehicle mount point.
- Designed to work with OEM dashboard only, not compatible with aftermarket modifications.
- Do not use with 3rd party extension arms. Adhere to our phone weight limits.
- Mount electronics away from airflow to prevent heat damage.

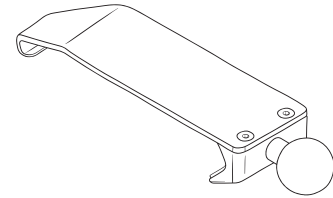
Self-installation instructions and advice are provided for your convenience. It is your responsibility to determine if you have the knowledge, skills, and physical ability required to properly perform an installation. Offroad shall have no liability for damage or injury resulting from the installation or use of any Offroad or third party products. It is your responsibility to ensure that all products are installed in adherence with local laws and regulations and in such a manner as to allow a vehicle to be operated safely and without distraction. Offroad product warranties do not cover the installation, removal or re-installation of any product.

COMPONENTS



Mounting Base

L-key



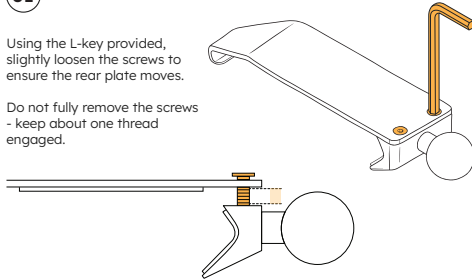
Mounting Base Installation

Ford Transit 2020+

01

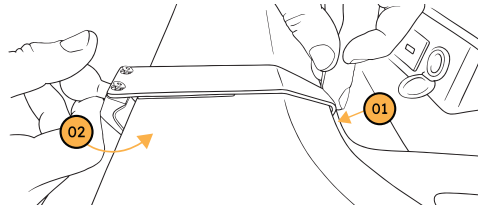
Using the L-key provided, slightly loosen the screws to ensure the rear plate moves.

Do not fully remove the screws - keep about one thread engaged.



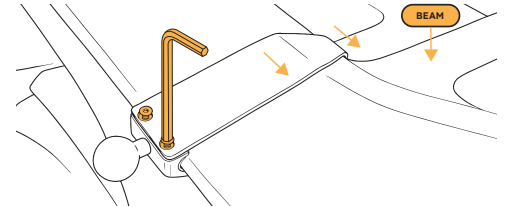
02

Just to the left of the upper dash beam, insert mounting base rear lip into the seam as shown (01) then position the mounting base front (02) over the instrument side of the dash.



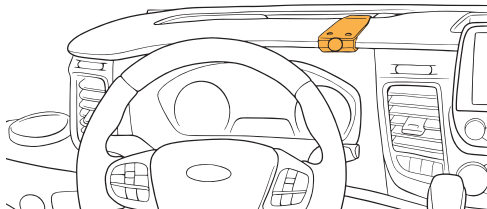
03

Align the right edge of the base with left edge of upper dash beam for optimal fit. Alternately hand tighten screws using L-key to a snug fit.



POSITIONING

Fits in the position shown, drivers side.



WATCH THIS INSTALL

